

## Operating Instructions

### BIOSTEAM CENTER

## LABORATORY EQUIPMENT IN STAINLESS STEEL



**REITEL Feinwerktechnik GmbH**

Senfdamm 20 - 49152 Bad Essen

Phone: +49(0)5472-9432-0 - Fax: +49(0)5472-9432-40

<http://www.reitel.com> - [info@reitел.com](mailto:info@reitел.com)

Dear Customer!

The BIOSTEAM CENTER is perfectly suited for steam cleaning workpieces. It can be activated either manually or with the foot pedal included in delivery. The wide opening and integrated illumination ensure comfortable working conditions. Steam is absorbed at the back of the steam center and condenses in the special filter, offering a clear view for the user. The efforts to clean the basin or other areas in the laboratory are considerably reduced.

Any other use or use beyond this is deemed improper. For resulting damage the user/operator of this device is solely responsible.

Prior to installation of the device operating instructions and especially the safety instructions must be read and followed by all personnel who use this device.

After having unpacked the device, please check carefully whether transportation damages of any kind have occurred. If that is the case, the carrier or manufacturer must be notified within 3 days. The company will **not** be responsible for any damages found after that.

These operating instructions must be read and followed by all personnel who use this device. To ensure quick access we recommend to keep it at a safe place near the device. In case of loss it can be ordered at a nominal fee from the manufacturer.

This document is protected by the copyright law. Passing on or duplication of this document or extracts thereof, evaluation and communication of its contents are not authorised. In case of loss it can be ordered at a nominal fee from the manufacturer.

## CONTENTS

<b>1</b>	<b>TECHNICAL DESCRIPTION.....</b>	<b>4</b>
1.1	BASIC EQUIPMENT.....	4
1.2	SPECIAL ACCESSORIES.....	4
1.3	OPERATING ELEMENTS.....	5
1.4	TECHNICAL DATA.....	8
<b>2</b>	<b>SAFETY NOTES .....</b>	<b>9</b>
2.1	GENERAL SAFETY NOTES .....	9
2.2	SPECIFIC SAFETY INSTRUCTIONS .....	10
<b>3</b>	<b>EQUIPMENT .....</b>	<b>11</b>
<b>4</b>	<b>NOTES FOR THE USER.....</b>	<b>11</b>
4.1	INSTALLATION.....	11
4.2	OPERATION.....	11
<b>5</b>	<b>TROUBLESHOOTING .....</b>	<b>12</b>
<b>6</b>	<b>MAINTENANCE .....</b>	<b>12</b>
<b>7</b>	<b>WARRANTY.....</b>	<b>13</b>
<b>8</b>	<b>DISPOSAL REGULATIONS .....</b>	<b>16</b>
<b>9</b>	<b>SPARE PARTS LIST .....</b>	<b>17</b>
<b>10</b>	<b>EC-CONFORMITY DECLARATION.....</b>	<b>18</b>

## **1 Technical Description**

### **1.1 Basic Equipment**

- Steam Center with suction, drain hose, fleece filter (fitted), steam check valve (ball valve), foot pedal, power connection and working lamp

### **1.2 Special Accessories**

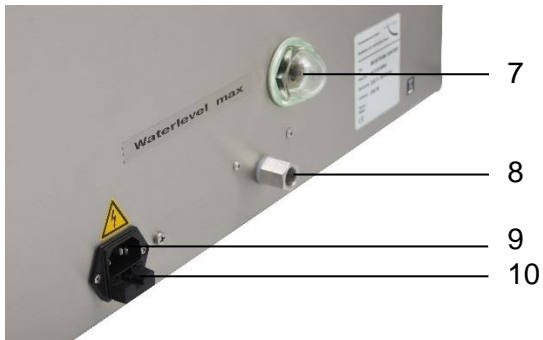
- Order-No.: 20109 Activated carbon filter

## 1.3 Operating Elements

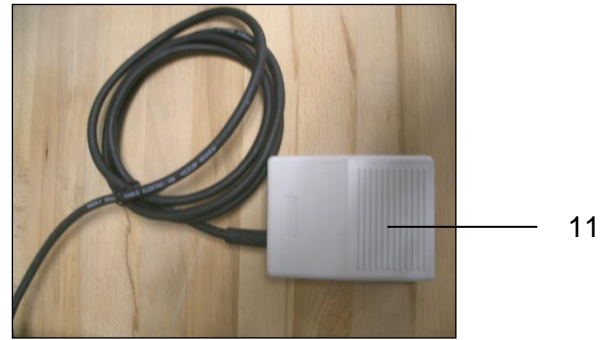
- 1 Housing
- 2 Power switch
- 3 Selector switch
- 4 Lamp (inside)
- 5 Drip tray (with fleece inlay) and access to filter cassette (14)
- 6 Foot pedal connection (left side of the housing)
- 7 Water level control
- 8 Outlet (optionally left or right)
- 9 Device fuse (2 pieces 3,15 A in electrical outlet under cap)
- 10 Electrical connection
- 11 Footswitch
- 12 Exhaust fan cover with exhaust air filter
- 13 Special accessories: Activated carbon filter screwed on the exhaust fan
- 14 Filter cassette condenser (stainless steel wool)
- 15 Fleece inlay



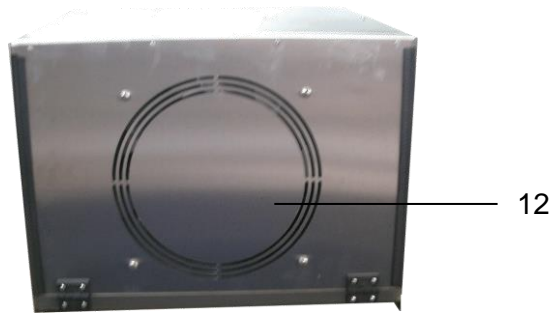
Device view



Lateral view



Footswitch



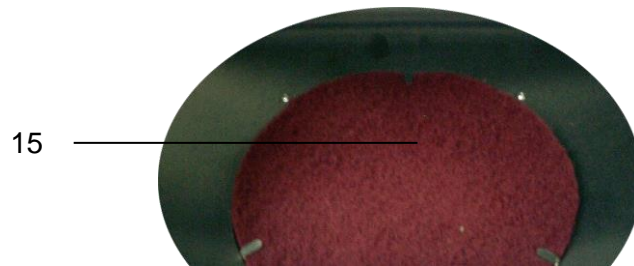
Device backside



Exhaust fan



Filter cassette for condenser



Fleece inlay

## 1.4 Technical Data

Line voltage	230 V/50–60 Hz
Current consumption	200 W
Height/width/depth	600/540/510 mm
Weight	35 kg
Suction power	1.860 m³/h
Sound level	77 dB(A)
Housing	Stainless steel
Order-No.:	10106
Made in Germany (Subject to modifications)	



## 2 Safety Notes

### 2.1 General Safety Notes

- All equipment undergoes final inspection and testing before leaving our factory. However, if equipment is damaged during shipping or through any other circumstances, it must not be used in service. Please check the device regularly for damages. Damaged parts should be replaced immediately.
- All power/air/water/gas sources should be rated for the demands of the device as listed in the technical data sheets. Maximum ratings must not be exceeded. All VDE (Verein Deutscher Elektro-Ingenieure) standards should be followed. Equipment should be grounded according to standards.
- Adherence to valid regulations regarding necessary checks (e.g. according to Accident Prevention & Insurance or electrical equipment) is exclusively taken over by the buyer/user of this product.
- This device has been designated to be used only for its intended purpose. All other applications must be prohibited for safety reasons as otherwise the manufacturer's warranty expires.
- The device should be set-up in a clean, well-ventilated room, if necessary under a hood.
- Supporting surfaces should be straight, flat and adequately stable.
- Don't place anything on top of the machine.
- To avoid injury, appropriate protection should be worn (e.g. gloves, safety glasses, safety shoes, hearing protection etc.)
- If the machine is defective or working improperly it must be taken out of service. In case of further use of the machine the owner will be held responsible for any consequential damage.
- To prevent accidents from water, fire or explosion, all power/air/water/gas sources should be turned off after working hours and during breaks, and secured against unauthorized access.
- When carrying out maintenance works or repairs or when opening the device always turn off the main power switch and unplug the whole unit.
- Repairs should be carried out only by the manufacturer or by qualified and certified personnel appointed according to chapter 7 – warranty.
- In case of leaking water out of housing or tank shut down device and call service.
- Check all hose joints for tightness, if necessary fasten clamps.

## 2.2 Specific Safety Instructions

**Note:**

- Ensure a minimum distance of 25 cm between back of the device and the wall.
  - Keep housing dry and clean.
- 
- Always respect the instructions for your steam cleaner.
  - Always respect manufacturer's instructions when using germ-restraining cleaning additives. Do not use cleaning agents or disinfectants containing chlorine. Decalcification is not necessary. Always respect the safety notes and meet the requirements of product data/safety data sheets on handling hazardous materials.
  - Please respect instructions or legal provisions for the object to be cleaned.

### 3 Equipment

The equipment delivered is ready for immediate use. The sealed plug can be connected directly to the mains supply 230 V/16 A. For installation please refer to chapter 2.

## 4 Notes for the User

### 4.1 Installation

1. Make electrical connections.
2. Install the drain hose. (Install 30 mm hose to the end of the outlet (8) and position the end of the hose under water in a receptacle or install hose with closed ball valve that is only opened for draining off water.)
3. Plug the cable of the foot pedal (11) into the outlet (6) and position it at an accessible place without trip hazard.

### 4.2 Operation

1. Turn on the main power switch (2). Position I MAN (manual switching), Position II FOOT (foot pedal).
2. Activate the selector switch (3) for the exhaust fan.
3. Hold the objects which need cleaning with the steam gun into the steam center, with the effect of considerably protecting your health and the environment.
4. After finishing work turn off the device and the exhaust fan.

## 5 Troubleshooting

Device cannot be switched on.	a. Check fuse of the building. b. Check device's fuse (9).
Fan doesn't work.	Check foot pedal. Turn device on by activating selector switch MAN.
Lamp (4) doesn't shine.	Defective lamp → replace it.
Insufficient suction power.	a. Filter (see chapter 6, maintenance) dirty or blocked. Replace filter. b. Water outlet must not always be open, if necessary install ball valve.

## 6 Maintenance

- Regularly check the device for visible damages to the housing or power cord.
- Regularly clean the housing with a damp cloth.
- Change the fleece (15) about once a week, depending on the degree of contamination.
- Change the filter cassette in the drip tray (5) at least semi-annually. Remove the fleece (15) and then remove filter cassette. New filter cassettes (14) can be ordered from the manufacturer.
- Empty the drip tray (5) according to water level control (7) at least once a week at the end of the outlet (8) via ball valve.
- Replace the exhaust filter (12) at the back of the device about every four weeks, depending on the degree of contamination. Pull the power plug, then remove the four cross recessed head screws and fold back the rear panel. Unscrew the nuts and replace the filter. Screw on back panel.

## 7 Warranty

We, REITEL Feinwerktechnik GmbH, offer a 1 year's warranty beginning from the proven date of purchase. This warranty covers all defects traceable to materials, design or workmanship. The following warranty regulations are applicable:

Within the warranty period Reitel Feinwerktechnik GmbH or an authorized distributor agrees at its sole option, to perform repair or replace this product at no charge covering all defects traceable to materials, design or workmanship. Warranty only applies to appropriate use and regular maintenance of this product according to the operating instructions. Claims under warranty are restricted to complementary performance. Additional claims, especially claims for indemnifications, are not covered by this warranty.

1.

Warranty claims have to be addressed to the distributor the product was purchased from or directly to our service department.

Contact:

REITEL Feinwerktechnik GmbH

Senfdamm 20

49152 Bad Essen

Germany

Phone: +49(0)5472-9432-32 (Service Department)

Phone: +49(0)5472-9432-0 (Reception)

Fax-No: +49(0)5472-9432-40

2.

In case of warranty claim application the sales receipt or your purchase invoice showing the date of purchase of the product and the serial number must be furnished. Securely pack and ship the device, freight charges prepaid, at your own risk to us, along with a report describing the defect. We reserve the right to decline warranty if this information has been removed or modified after purchase of the product or if they are not included in case of warranty claims.

3.

Warranty repairs have to be performed by REITEL Feinwerktechnik GmbH or by authorised distributors. Repairs performed by non-authorised companies will void the claim for refund since damages to the product resulting hereof are not covered by warranty.

4.

If the unit sent in for repair or replacement is still under the original warranty then warranty is to the end of the original 1 year warranty.

5.

If the unit is destined to be operated in another country than originally intended and manufactured for, modifications to the product might be necessary to comply to special technical and /or safety standards of that specific country. Such modifications are no defects traceable to materials, design or workmanship. and are therefore expressly excluded from warranty claims.

Modification costs or damages arising from operation of the product under deviating conditions are not covered by warranty.

6.

Exclusions from warranty:

- Service and maintenance work as well as repair and replacement of consumables according to our consumables' list
- Transportation cost of the machine or installation and dismounting expenses incurred
- Damages due to use of the product other than for its intended purpose
- Damages due to faulty installation or insufficient maintenance of the product (e.g. decalcification)
- Damages due to natural disaster e.g. lightning, water, fire, act of nature beyond control, war, inadequate line voltage, insufficient ventilation, no decalcification, insufficient care and cleaning or non-adherence to operation and maintenance instructions according to the accompanying operation guide.
- Damage due to use of the product other than in accordance with the instructions provided by REITEL Feinwerktechnik GmbH;
- The warranty does not cover the cost of removal and replacement of parts and accessories, unless supplied as original equipment by REITEL Feinwerktechnik GmbH
- All kind of damages occurred not directly at the device as well as consequential damages (e.g. damages to furniture due to a lack of water, downtime of the machine, material, lost working hours, wages and other consequential damages).

This warranty shall be rendered null and void if:

- the product has been subject to any modification, repair or replacement other than as authorised by REITEL Feinwerktechnik GmbH
- the product is continued to be operated despite a functional defect

7.

The warranty is device specific and may be claimed, within the warranty period, by any person who has legally acquired the device.

8.

Consumables are excluded from warranty. Spare parts are subject to a warranty coverage of 6 months against all defects traceable to materials, design or workmanship according to these warranty regulations.

9.

Legal default claims on the part of the purchaser remain unaffected by this warranty.

10.

We reserve the right to charge a fee of 30 € if repair of the device is rejected and the device is destined to be sent back unrepared.

11.

**Please note:**

Upon repair or replacement of this unit, personal data and settings might get lost or damaged. We don't accept liability for all kind of data loss. The customer is advised to backup essential programs and data before sending for service.

12.

This warranty shall be interpreted in accordance with German law to the exclusion of UN sales law. Place of jurisdiction is our business location.

13.

If any provisions of this warranty are judged to be illegal or unenforceable, the continuation in full force and effect of the remaining provisions will not be prejudiced. The provisions of this warranty judged to be illegal or unenforceable shall be construed so as to give effect to the intent manifested by the provision held invalid, illegal or unenforceable and to give effect to section 13 hereof.

14.

Should you need to borrow a device while your device is being repaired, please contact Messrs. REITEL or your distributor. These loans are a service for which availability cannot necessarily be guaranteed. After the warranty period, a fee may be charged for loan equipment as well as for shipping and packaging.

## 8 Disposal Regulations



According to valid laws our devices are properly disposed of according to B2B – Regulations for proper disposal. Pls. contact your local dealer for additional information.



## 9 Spare Parts List

Z.-Nr.: Dr.-No.:	Best.-Nr.: Ref.:		Menge Qty.	ME Unit
	E76019	Absauggebläse / Suction fan	1	St./pc.
	20109	Aktivkohlefilter (Nachrüstung ab Geräte No. 281 möglich) / Activated carbon filter	1	St./pc.
	E73362	Nachrüstsatz LED-Leuchte, inkl. Einbauanleitung, Adapterplatte und Blende / Update mounting set to LED light	1	Satz/set
	E72083	Daylight Leuchte 9W IP 54 (ab Geräte No. 191) / Daylight lamp 9W IP 54 (from device no. 191)	1	St./pc.
	E109034	Energiesparlampe Ersatzteil für Daylight Leuchte 9W / Energy saving lamp (spare part for daylight lamp 9W)	1	St./pc.
	E61312	Einbausteckdose mit Abdeckung / Built-in socket with cover	1	St./pc.
	E70492	Feinsicherung / Fine fuse	1	St./ pc.
	E63066.2	Filterkassette rund (ab Geräte No. 250) / Round filter cassette (from device no. 250)	1	St./pc.
	E78054.2	Filtermatte, Arbeitsraum (Einlegevlies rot) ab Geräte No. 250 / Filter mat, working area (red fleece inlay) from device no. 250	3	Satz/set
	E61516.3	Filterscheibe hinten, d=230mm (ab Geräte No. 281) / Filter disc backside, d=230 mm (from device no. 281)	1	St./pc.
	E61894	Fussschalter (ab Geräte No. 186) / Foot switch (from device no. 186)	1	St./pc.
	E60602	Gummipuffer (4Stück) / Rubber feet (4 pcs.)	1	Satz/set
	E62925.1	Halter für Dampfpistole (incl. Schrauben) / Holder for steam gun (incl. screws)	1	St./pc.
	E61521	Kantenschutzprofil / Edge protection profile	1	m
	E61638	Kappe / Cap	2	St./pc.
	E60037.1	Kugelhahnbaugruppe inklusive Anschluß + Schlauch / Ball valve unit incl. connection and hose	1	St./pc.
	E78718	Lochblech-Filtereinlage / Perforated plate-filter cartridge	1	St./pc.
	E60767	O-Ring / O-Ring	2	St./pc.
	E60648	Schalter beleuchtet grün / Green illuminated switch	1	St./pc.
	E60421	Schalter Wahl I-0-II / Selector switch I-0-II	1	St./pc.
	E78038	Schauglas gewölbt, mit Dichtung / Curved sight glass, incl. seal	1	St./pc.
	E60650	Schutzkappe für Schalter / Protective cap for switch	1	Satz/set
	E70497	Sicherungshalter / Fuse holder	1	St.pc.
	E60719	Zuleitung / Feed	1	St./pc.

## 10 EC-Conformity Declaration

### EG-Konformitätserklärung EC-Conformity Declaration CE-Déclaration de Conformité

im Sinne der EG-Richtlinie 2006/42/EG über Maschinen (Anhang II A)  
according to Machinery Directive 2006/42/EC (Appendix II A)  
au sens de la Directive Machines 2006/42/CE (Annexes II A)

**Name und Anschrift des Herstellers/Name and address of manufacturer/Nom et adresse du fabricant:**

Reitel Feinwerktechnik GmbH  
Senfdamm 20  
49152 Bad Essen

Diese Erklärung bezieht sich nur auf die Maschine in dem Zustand, in dem sie in Verkehr gebracht wurde; vom Endnutzer nachträglich angebrachte Teile und/oder nachträglich vorgenommene Eingriffe bleiben unberücksichtigt. Die Erklärung verliert ihre Gültigkeit, wenn das Produkt ohne Zustimmung umgebaut oder verändert wird./This declaration relates exclusively to the machinery in the state in which it was placed on the market and excludes components which are added and/or operations carried out subsequently by the final user. This declaration will become invalid if any unauthorised modification is made to the product./Cette déclaration concerne exclusivement les machines dans l'état dans lequel elles ont été mises sur le marché et exclut des composants ajoutés et/ou les opérations effectuées par la suite par l'utilisateur final. La présente déclaration perd sa validité si des modifications non-autorisées ont été apportées à la machine.

**Hiermit erklären wir, dass die nachstehend beschriebene Maschine/We hereby declare that the machine described below/Nous déclarons que la machine ci-dessous**

**Produktbezeichnung/Product name/Nom du produit:** BIOSTEAM CENTER

**Typenbezeichnung/Type/Type:** Abdampfcenter

allen einschlägigen Bestimmungen der Maschinenrichtlinie 2006/42/EG entspricht. Die Schutzziele der Richtlinie 2006/95/EG über elektrische Betriebsmittel werden eingehalten./is in conformity with all applicable requirements of the Machinery Directive 2006/42/EC. The safety objectives of the Directive on Electrical Equipment 2006/95/EC are adhered to./est conforme aux dispositions applicables de la Directive Machines 2006/42/CE. Les objectifs de sécurité de la Directive sur les Matériels Electriques 2006/95/CE sont respectés.

**Angewandte harmonisierte Normen/Harmonised standards applied/Normes harmonisées appliquées:**

EN 12100:2010  
EN 60204-1:2006  
EN 61010-1:2001

**Bevollmächtigter für die Zusammenstellung der relevanten technischen Unterlagen/Representative authorised to compile the relevant technical documentation/Personne autorisée à constituer la documentation technique pertinente:**

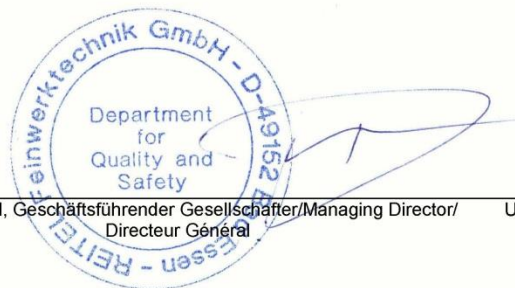
Daniel Reitel  
Reitel Feinwerktechnik GmbH  
Senfdamm 20  
49152 Bad Essen

06.02.2014

Ort, Datum  
Place, Date  
Lieu, Date

Daniel Reitel, Geschäftsführender Gesellschafter/Managing Director/  
Directeur Général

Unterschrift/Signature/  
Signature





We manufacture in compliance with Quality Management ISO 9001:2008 incorporating established standards.



**REITEL Feinwerktechnik GmbH**  
Senfdamm 20 - 49152 Bad Essen  
Phone: +49(0)5472-9432-0 - Fax: +49(0)5472-9432-40  
<http://www.reitel.com> - [info@reitel.com](mailto:info@reitel.com)